



Title:	35. Winter view to Shab hill from foot-path north of Stockwell Farm	HFoV (°)	90	Visualisation type	1	View direction	North
Date, time:	4 February 2020, 12:16	Scale/ Enlargement factor	96% at A1	Projection	Cylindrical	Camera (lens)	Sony A7rIV, FFS (35mm)



Title:	35. Summer view to Shab hill from footpath north of Stockwell Farm	HFoV (°)	90	Visualisation type	1	View direction	North
Date, time:	9 September 2019, 16:31	Scale/ Enlargement factor	96% at A1	Projection	Cylindrical	Camera (lens)	Nikon D610, FFS (Nikon 50mm)



**ARUP**

Issue	Date	Comment	By	Chkd	Appd
C01	2021-05-20	DCO Application Submission (May 2021)	HS	AK	JP

A3 - Stage Completed



Winter baseline photograph



Operation year 1 winter photomontage

Title	35. Year 1 view to Shab hill from footpath north of Stockwell Farm	HFoV (°)	90	Visualisation type	4	Camera (lens)	Sony A7rIV, FFS (35mm)
Date, time	4 February 2020, 12:16	Scale/ Enlargement factor	96% at A1	Projection	Cylindrical	Height of camera lens	1.6m
Coordinates	SO 94343 14497 278m AOD	Distance from site boundary	0m	View direction	330° from N		
To be viewed at comfortable arms length							



**ARUP**

Issue	Date	Comment	By	Chkd	Appd
C01	2021-05-20	DCO Application Submission (May 2021)	HS	AK	JP

A3 - Stage Completed

**A417 Missing Link Project**  
**Figure 7.10 Photosheets and Visualisations. Sheet 72 of 92**  
 HE551505-ARP-ELS-X\_XX\_XXXX\_X-VS-LE-000007



Winter baseline photograph



Operation year 15 winter photomontage

Title	35. Year 15 view to Shab hill from foot-path north of Stockwell Farm	HFoV (°)	90	Visualisation type	4	Camera (lens)	Sony A7rIV, FFS (35mm)
Date, time	4 February 2020, 12:16	Scale/ Enlargement factor	96% at A1	Projection	Cylindrical	Height of camera lens	1.6m
Coordinates	SO 94343 14497 278m AOD	Distance from site boundary	0m	View direction	330° from N		
To be viewed at comfortable arms length							

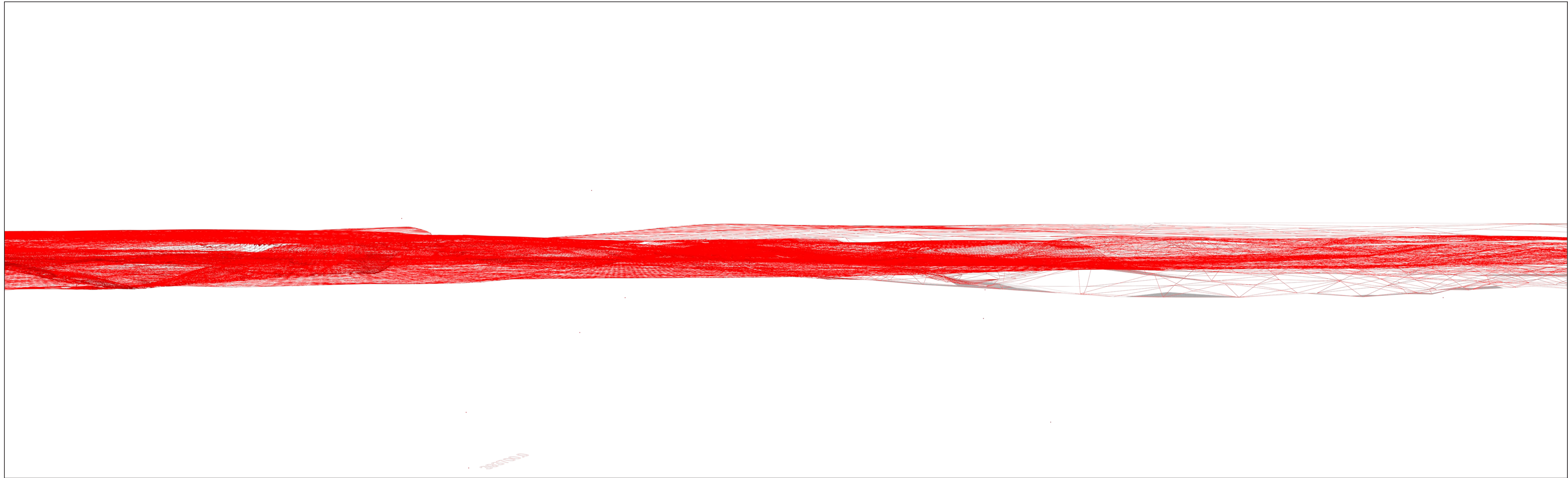


**ARUP**

Issue	Date	Comment	By	Chkd	Appd
C01	2021-05-20	DCO Application Submission (May 2021)	HS	AK	JP

A3 - Stage Completed

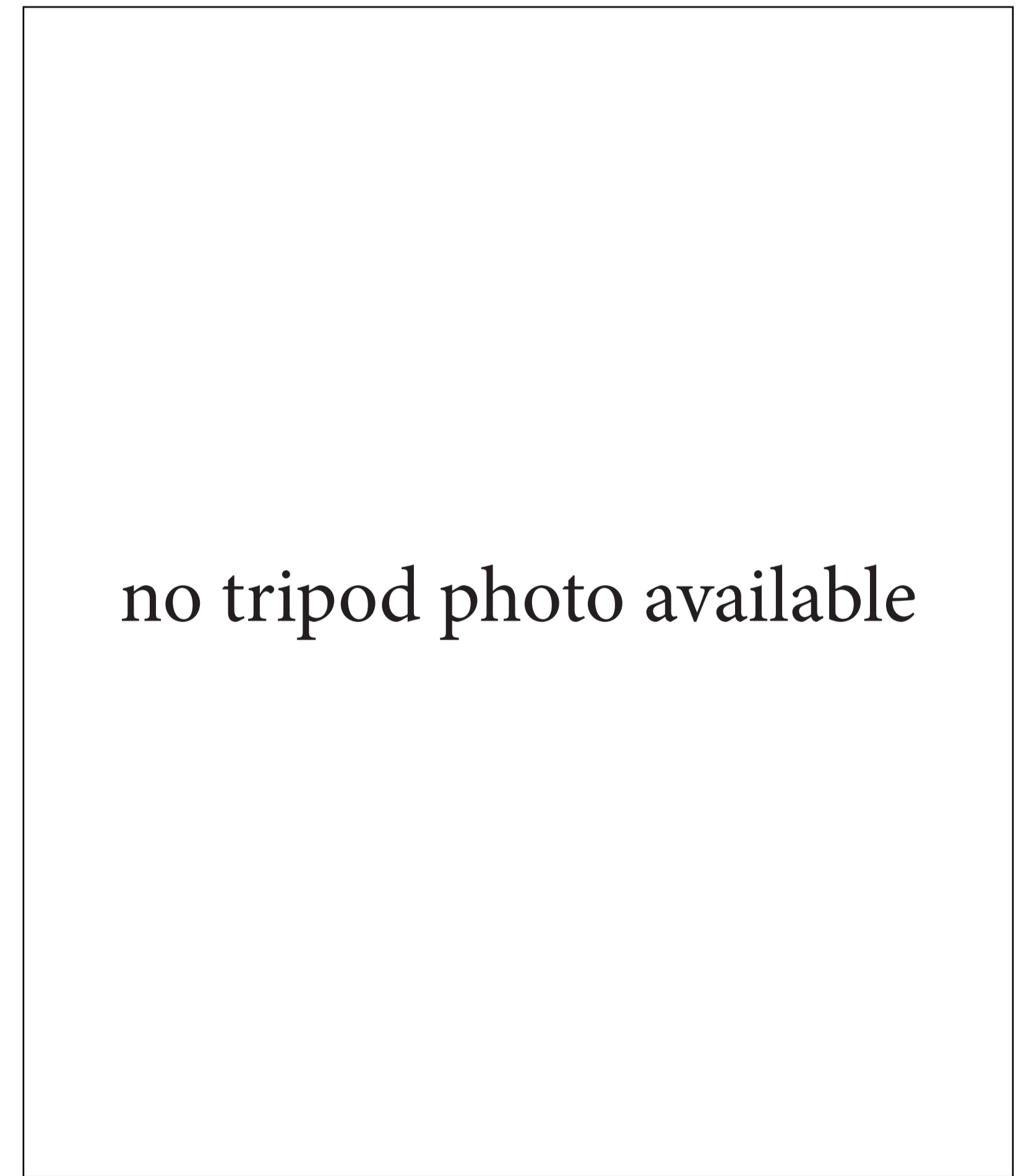
**A417 Missing Link Project**  
**Figure 7.10 Photosheets and Visualisations. Sheet 73 of 92**  
 HE551505-ARP-ELS-X\_XX\_XXXX\_X-VS-LE-000007



Wireline



Composite image



Tripod location

Title	35. Working view to Shab hill from foot-path north of Stockwell Farm	HFoV (°)	90	Visualisation type	4	Camera (lens)	Sony A7rIV, FFS (35mm)
Date, time	4 February 2020, 12:16	Scale/ Enlargement factor	96% at A1	Projection	Cylindrical	Height of camera lens	1.6m
Coordinates	SO 94343 14497 278m AOD	Distance from site boundary	0m	View direction	330° from N		

To be viewed at comfortable arms length



**ARUP**

Issue	Date	Comment	By	Chkd	Appd
C01	2021-02-20	DCO Application Submission (May 2021)	HS	AK	JP

A3 - Stage Completed

**A417 Missing Link Project**  
**Figure 7.10 Photosheets and Visualisations. Sheet 74 of 92**  
 HE551505-ARP-ELS-X\_XX\_XXXX\_X-VS-LE-000007



Night time representation



Night time data

Title	35. Night view to Shab hill from footpath north of Stockwell Farm	HFoV (°)	90	Visualisation type	4	Camera (lens)	Sony A7rIV, FFS (35mm)
Date, time	4 February 2020	Scale/ Enlargement factor	96% at A1	Projection	Cylindrical	Height of camera lens	1.6m
Coordinates	SO 94343 14497 278m AOD	Distance from site boundary	0m	View direction	330° from N		
To be viewed at comfortable arms length							



**ARUP**

Issue	Date	Comment	By	Chkd	Appd
C01	2021-05-20	DCO Application Submission (May 2021)	HS	AK	JP

A3 - Stage Completed

**A417 Missing Link Project**  
**Figure 7.10 Photosheets and Visualisations. Sheet 75 of 92**  
 HE551505-ARP-ELS-X\_XX\_XXXX\_X-VS-LE-000007



Title:	37. Winter view from junction of three PRowWs north of Stockwell	HFoV (°)	90	Visualisation type	1	View direction	North
Date, time:	11 March 2020, 12:54	Scale/ Enlargement factor	96% at A1	Projection	Cylindrical	Camera (lens)	Nikon D610, FFS (Nikon 50mm)



Title:	37. Summer view from junction of three PRowWs north of Stockwell	HFoV (°)	90	Visualisation type	1	View direction	North
Date, time:	19 September 2019, 14:36	Scale/ Enlargement factor	96% at A1	Projection	Cylindrical	Camera (lens)	Nikon D610, FFS (Nikon 50mm)



**ARUP**

Issue	Date	Comment	By	Chkd	Appd
C01	2021-05-20	DCO Application Submission (May 2021)	HS	AK	JP

A3 - Stage Completed

**A417 Missing Link Project**  
**Figure 7.10 Photosheets and Visualisations. Sheet 76 of 92**  
 HE551505-ARP-ELS-X\_XX\_XXXX\_X-VS-LE-000007



Title:	38. Winter view along Restricted byway east of Stockwell	HFoV (°)	90	Visualisation type	1	View direction	East
Date, time:	11 March 2020, 13:07	Scale/ Enlargement factor	96% at A1	Projection	Cylindrical	Camera (lens)	Nikon D610, FFS (Nikon 50mm)



Title:	38. Summer view along Restricted byway east of Stockwell	HFoV (°)	90	Visualisation type	1	View direction	East
Date, time:	11 September 2019, 16:27	Scale/ Enlargement factor	96% at A1	Projection	Cylindrical	Camera (lens)	Nikon D610, FFS (Nikon 50mm)



**ARUP**

Issue	Date	Comment	By	Chkd	Appd
C01	2021-05-20	DCO Application Submission (May 2021)	HS	AK	JP

A3 - Stage Completed

**A417 Missing Link Project**  
**Figure 7.10 Photosheets and Visualisations. Sheet 77 of 92**  
 HE551505-ARP-ELS-X\_XX\_XXXX\_X-VS-LE-000007



Title:	38b. Winter view to Stockwell from restricted byway between Stockwell and Hardings	HFoV (°)	90	Visualisation type	1	View direction	North East
Date, time:	11 March 2019, 13:28	Scale/ Enlargement factor	96% at A1	Projection	Cylindrical	Camera (lens)	Nikon D610, FFS (Nikon 50mm)



Title:	38b. Summer view to Stockwell from restricted byway between Stockwell and Hardings	HFoV (°)	90	Visualisation type	1	View direction	North East
Date, time:	26 September 2019, 09:51	Scale/ Enlargement factor	96% at A1	Projection	Cylindrical	Camera (lens)	Nikon D610, FFS (Nikon 50mm)



Issue	Date	Comment	By	Chkd	Appd
C01	2021-05-20	DCO Application Submission (May 2021)	HS	AK	JP

A3 - Stage Completed





Title:	39. Winter view to A417 from detrunked A417 in Birdlip	HFoV (°)	90	Visualisation type	1	View direction	North
Date, time:	21 November 2019, 12:13	Scale/ Enlargement factor	96% at A1	Projection	Cylindrical	Camera (lens)	Nikon D610, FFS (Nikon 50mm)



Title:	39. Summer view to A417 from detrunked A417 in Birdlip	HFoV (°)	90	Visualisation type	1	View direction	North
Date, time:	26 September 2019, 13:47	Scale/ Enlargement factor	96% at A1	Projection	Cylindrical	Camera (lens)	Nikon D610, FFS (Nikon 50mm)



Issue	Date	Comment	By	Chkd	Appd
C01	2021-05-20	DCO Application Submission (May 2021)	HS	AK	JP

A3 - Stage Completed

**A417 Missing Link Project**  
**Figure 7.10 Photosheets and Visualisations. Sheet 79 of 92**  
 HE551505-ARP-ELS-X\_XX\_XXXX\_X-VS-LE-000007



Title:	40. Winter view from jcn of bridleway and prow north of Birdlip quarry	HFoV (°)	90	Visualisation type	1	View direction	West
Date, time:	11 March 2019, 13:46	Scale/ Enlargement factor	96% at A1	Projection	Cylindrical	Camera (lens)	Nikon D610, FFS (Nikon 50mm)



Title:	40. Summer view from jcn of bridleway and prow north of Birdlip quarry	HFoV (°)	90	Visualisation type	1	View direction	West
Date, time:	26 September 2019, 09:59	Scale/ Enlargement factor	96% at A1	Projection	Cylindrical	Camera (lens)	Nikon D610, FFS (Nikon 50mm)



**ARUP**

Issue	Date	Comment	By	Chkd	Appd
C01	2021-05-20	DCO Application Submission (May 2021)	HS	AK	JP

A3 - Stage Completed

**A417 Missing Link Project**  
**Figure 7.10 Photosheets and Visualisations. Sheet 80 of 92**  
 HE551505-ARP-ELS-X\_XX\_XXXX\_X-VS-LE-000007



Title:	41. Winter view toward Stockwell from Golden Heart Inn	HFoV (°)	90	Visualisation type	1	View direction	North
Date, time:	11 March 2020, 10:44	Scale/ Enlargement factor	96% at A1	Projection	Cylindrical	Camera (lens)	Nikon D610, FFS (Nikon 50mm)



Title:	41. Summer view toward Stockwell from Golden Heart Inn	HFoV (°)	90	Visualisation type	1	View direction	North
Date, time:	5 September 2019, 14:06	Scale/ Enlargement factor	96% at A1	Projection	Cylindrical	Camera (lens)	Nikon D610, FFS (Nikon 50mm)



**ARUP**

Issue	Date	Comment	By	Chkd	Appd
C01	2021-05-20	DCO Application Submission (May 2021)	HS	AK	JP

A3 - Stage Completed

**A417 Missing Link Project**  
**Figure 7.10 Photosheets and Visualisations. Sheet 81 of 92**  
 HE551505-ARP-ELS-X\_XX\_XXXX\_X-LS-LE-000007



Title:	41b. Winter view to Birdlip Quarry from Golden Heart Inn	HFoV (°)	90	Visualisation type	1	View direction	North East
Date, time:	11 March 2020, 10:51	Scale/ Enlargement factor	96% at A1	Projection	Cylindrical	Camera (lens)	Nikon D610, FFS (Nikon 50mm)



Title:	41b. Summer view to Birdlip Quarry from Golden Heart Inn	HFoV (°)	90	Visualisation type	1	View direction	North East
Date, time:	5 September 2019, 14:06	Scale/ Enlargement factor	96% at A1	Projection	Cylindrical	Camera (lens)	Nikon D610, FFS (Nikon 50mm)



**ARUP**

Issue	Date	Comment	By	Chkd	Appd
C01	2021-05-20	DCO Application Submission (May 2021)	HS	AK	JP

A3 - Stage Completed

**A417 Missing Link Project**  
**Figure 7.10 Photosheets and Visualisations. Sheet 82 of 92**  
 HE551505-ARP-ELS-X\_XX\_XXXX\_X-VS-LE-000007